

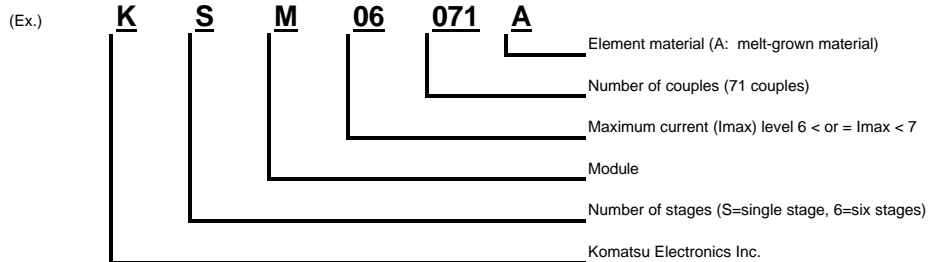
Table 2: Multi-purpose & Multi-stage Modules

Type	Model No.	I max (A)	V max (V)			Delta T max (C)			Qc max (W)			Top Ceramics		Bottom Ceramics		Height (mm)	Height Tolerance (+/- mm)	Ceramics	Metallization		
			Thj= 27 C	Thj= 50 C	Thj= 70 C	Thj= 27 C	Thj= 50 C	Thj= 70 C	Thj= 27 C	Thj= 50 C	Thj= 70 C	W (mm)	L (mm)	W (mm)	L (mm)				Ni	Cu-Ni-Au (Pretinning)	
Multi-purpose	KSM-04007A	4.0	0.8	0.9	1.0	70	80	87	2.0	2.2	2.5	10.3	10.3	10.3	10.3	4.7	0.15	Alumina	O		
	KSM-04017A	4.0	2.0	2.2	2.5	70	80	87	4.8	5.4	6.0	15.0	15.0	15.0	15.0	4.7	0.15		O		
	KSM-04031A	4.0	3.6	4.1	4.5	70	80	87	8.7	9.9	10.9	20.0	20.0	20.0	20.0	4.7	0.15		O		
	KSM-04071A	4.0	8.3	9.2	10.2	70	80	87	19.9	22.6	24.9	30.0	30.0	30.0	30.0	4.7	0.15		O		
	KSM-04127A	4.0	14.8	16.7	18.3	70	80	87	35.6	40.4	44.5	40.0	40.0	40.0	40.0	4.7	0.15		O		
	KSM-06007A	6.0	0.8	0.9	1.0	70	80	87	3.0	3.4	3.7	10.3	10.3	10.3	10.3	3.8	0.15		O		
	KSM-06017A	6.0	2.0	2.2	2.4	70	80	87	7.2	8.2	9.0	15.0	15.0	15.0	15.0	3.8	0.15		O		
	KSM-06031A	6.0	3.6	4.1	4.5	70	80	87	13.1	14.9	16.4	20.0	20.0	20.0	20.0	3.8	0.15		O		
	KSM-06071A	6.0	8.3	9.2	10.2	70	80	87	30.0	34.1	37.6	30.0	30.0	30.0	30.0	3.8	0.15		O		
	KSM-06127A	6.0	14.7	16.5	18.2	70	80	87	53.8	61.0	67.2	40.0	40.0	40.0	40.0	3.8	0.15		O		
	KSM-09007A	9.0	0.8	0.9	1.0	70	80	87	4.5	5.1	5.6	15.0	15.0	15.0	15.0	5.5	0.15		O		
	KSM-09017A	9.0	2.0	2.2	2.4	70	80	87	10.8	12.3	13.5	22.0	22.0	22.0	22.0	5.5	0.15		O		
	KSM-09031A	9.0	3.6	4.0	4.4	70	80	87	19.7	22.4	24.6	30.0	30.0	30.0	30.0	5.5	0.15		O		
	KSM-09071A	9.0	8.2	9.2	10.2	70	80	87	45.2	51.2	56.4	44.0	44.0	44.0	44.0	5.5	0.15		O		
	KSM-14031A	14.0	3.6	4.0	4.5	70	80	87	30.6	34.7	38.2	30.0	30.0	30.0	30.0	4.6	0.15		O		
	KSM-14071A	14.0	8.3	9.3	10.2	70	80	87	70.1	79.4	87.5	44.0	44.0	44.0	44.0	4.6	0.15		O		
	KSM-26032A	26.6	3.7	4.2	4.6	70	80	87	60.3	68.3	75.1	40.4	40.4	40.4	40.4	5.4	0.15		O		
	KSM06071B*	6.5	7.2	8.1	8.8	70	80	87	34.1	38.6	42.6	30.0	30.0	30.0	30.0	4.1	0.15		O		
KSM-26032B*	26.6	3.7	4.2	4.6	70	80	87	60.3	68.3	75.1	40.4	40.4	40.4	40.4	5.5	0.15	O				
Multi-stage	Micro-multi	K2M-01004Z	1.5	1.2	1.4	1.5	103	116	128	0.5	0.6	0.7	4.4	4.4	4.4	6.5	4.5	0.2	Alumina	O	
		K2M-01011Z	1.4	3.2	3.7	4.1	102	116	127	1.5	1.7	1.9	4.4	6.6	8.7	8.7	4.5	0.2		O	
		K2M-01023Z	1.3	4.6	5.2	5.8	97	109	120	2.8	3.1	3.4	8.0	8.8	10.0	13.1	3.8	0.2	AlN		O
		K3M-01002Z	1.4	1.9	2.2	2.4	124	140	154	0.3	0.4	0.4	2.6	2.6	6.2	6.2	5.4	0.3	Alumina	O	
	K3M-01004Z	1.3	3.3	3.8	4.2	119	134	148	0.6	0.7	0.7	4.4	4.4	8.7	8.7	6.5	0.3	O			
	Multi-purpose	K2M-05026M	5.5	8.0	9.0	9.9	92	104	115	13.1	16.3	16.3	13.0	19.0	21.5	28.0	5.3	0.3	AlN		O
		K3M-04011M	4.6	7.4	8.4	9.2	110	125	138	6.0	7.5	7.5	8.5	13.0	21.5	28.0	7.6	0.4			O
		K4M-04005M	4.4	7.3	8.3	9.1	124	141	155	2.9	3.6	3.6	6.6	11.0	21.5	28.0	9.9	0.5			O
		K5M-04002M	4.1	6.9	7.9	8.7	136	154	169	1.3	1.6	1.6	5.3	5.3	21.5	28.0	12.1	0.5			O
		K6M-03001M	3.6	6.3	7.1	7.9	145	163	179	0.6	0.8	0.8	5.3	5.3	21.5	28.0	14.4	0.5			O

Explanation of I max, V max, Delta T max and Qc max are described in page 10 of the catalogue.

* These modules are specially designed for long endurance in a relatively hard operations.

How to read the model number



1. Delta T max is described as the value in vacuum of 0.13 Pa.

2. Multi-purpose modules are 100% screened.

3. Multi-purpose module: PbSn (melting point: 165 degrees C) is used as the assembly solder. Pb-free, fatigue-resistant SnAgCu (melting point: 217 degrees C) is also available.

4. Multi-stage module: PbSn (melting point: 183 degrees C) is used as the assembly solder.

5. The high performance M-material is available for custom multi-purpose module applications. Single-stage modules with M-material has about 4 degrees C larger delta T max than those with the standard melt grown A-material, and this has merit in some applications in terms of higher delta T achievement or reduced power consumption.

6. Multi-puopse module: Average +/- 0.025 mm height allowance is available by lapping.